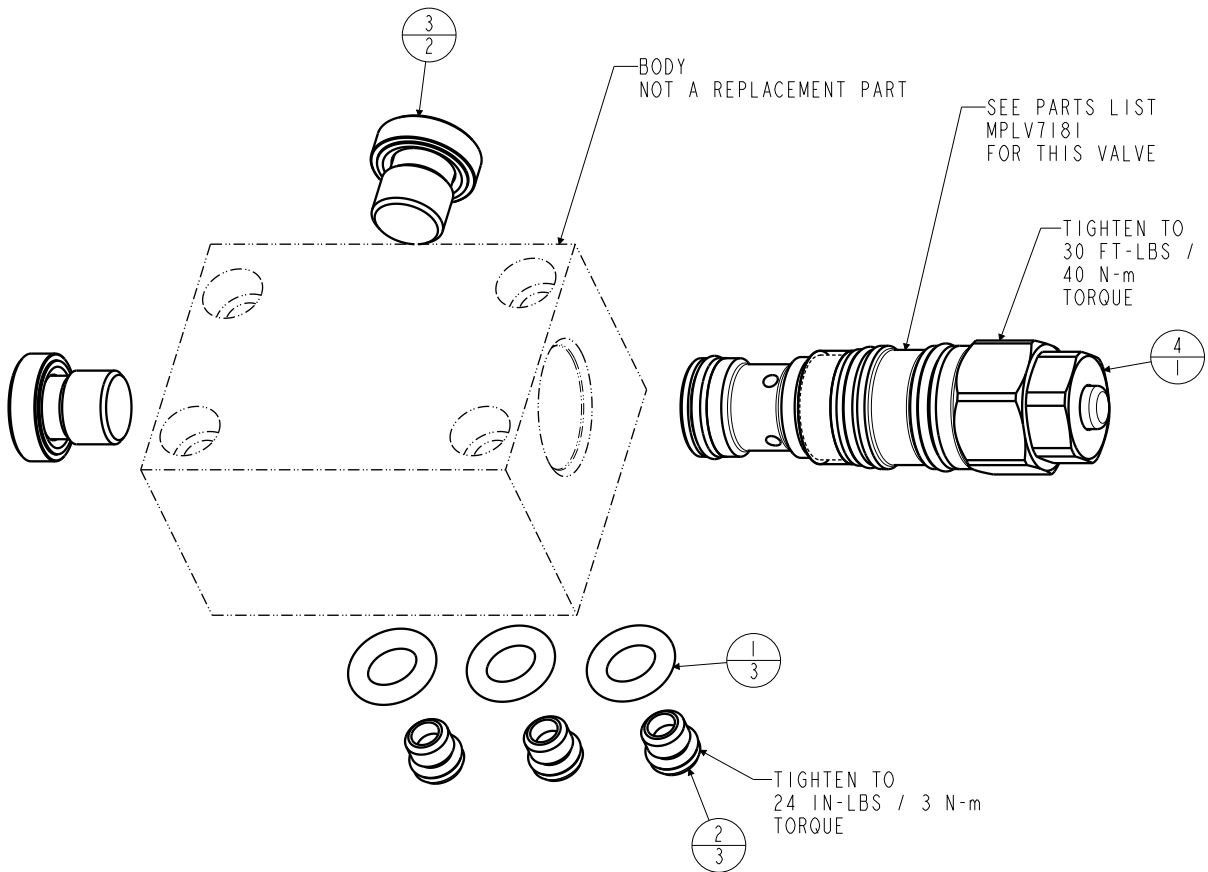


LUBRICATE ALL SEALS WITH CLEAN HYDRAULIC OIL PRIOR TO ASSEMBLY.
DO NOT USE SILICONE BASED LUBRICANTS.



REFERENCE NOTE
THIS MANUAL PO CHECK VALVE TAKES 3.5 LBS PER 100 PSI TO RELEASE
OR 15.568 NEWTON PER 0.965 BAR TO RELEASE



WEIGHT 2.50 LBS

No.	QTY	PART No.	DESCRIPTION
4	1	47033371	ASSY,VLV,PO CHECK,CM,MANUAL
3	2	43068006	PLUG, PORT, HOLLOW HEX, G1/4
2	3	43061122	PLUG, SOCH, METRIC, M8
1	3	39000050	O-RING, (-204)

PARTS LIST



VEKTEK, INC.
1334 E. SIXTH AVE. P.O. BOX 625
EMPORIA, KS. 66801 U.S.A.

A	5635	RELEASE	JDW	03/21/25
REV	IN ACCORDANCE WITH ECN	EFFECTIVE DATE	REVISED BY	DATE
DRW BY:	JDW	DRAWING STATUS: Released		
DATE:	03/21/25	PRODUCTION APPROVED FOR RELEASED STATUS ONLY		

ASSEMBLIES AFFECTED
47033173

PARTS LIST, ASSY,MANIFOLD,PO CHECK,BSPP,MANUAL

SIZE
A MPLV7183

REV
A

FORM FEG035_PL_ASIZE, REV. B

SHEET 1 OF 1